

PRODUCT DESCRIPTION



300
g/m²

THOR JACKET

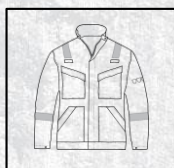
Material : 78% Cotton, 20% Polyester 2% Antistatic



FIRE RETARDANT
REFLECTIVE BAND TAPE

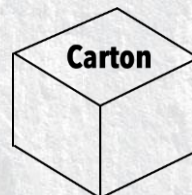
SIZE	40 / 42 S	44 / 46 M	48 / 50 L	52 / 54 XL	56 / 58 XXL	60 / 62 XXXL
THOR JACKET NAVY	8MTHJNS	8MTHJNM	8MTHJNL	8MTHJNXL	8MTHJNXXL	8MTHJNXXXL

PACKING



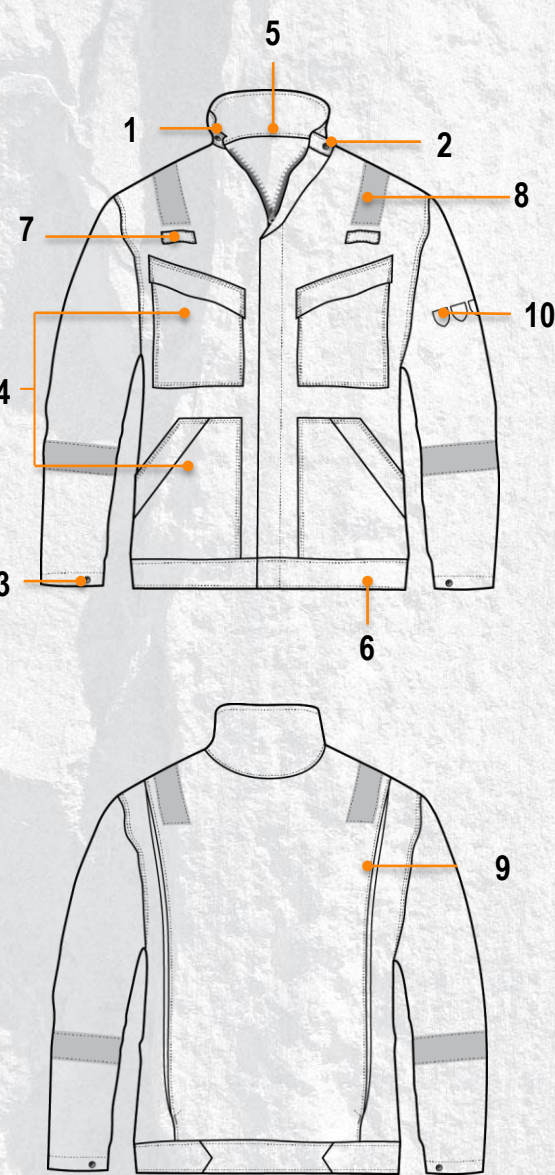
Individual
Packing

X 10



10 Pieces In
1 Carton

DESIGN & TECHNICITY



1. Neck

- Mandarin collar fastened with press button



2. Fasteners

- Zipper fasteners & flap fastened



3. Sleeves

- Long sleeves with cuffs which can be adjusted with press buttons



4. Pockets

- 2 breast pockets with flaps fastened with press buttons
- 1 inner pockets
- 2 bottom pockets with flaps fastened by press buttons



5. Tagging collar

- 1 tagging collar at the neck



6. Waist

- Waist which can be adjusted with a ball and press buttons



7. Chest loop

- 2 chest loops above the breast pockets



8. Retro-reflective bands

- Fire retardant retro-reflective bands



9. Back

- Comfort gussets in the back



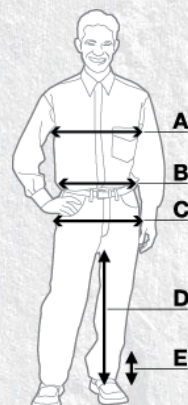
10. Icons

- Icons for the standards on the left sleeve



11. Markable

- Markable on chest pocket or back



	XS	S	M	L	XL	XXL	XXXL	XXXXL								
	0	1	2	3	4	5	6	7								
	36	38	40	42	44	46	48	50								
	52	54	56	58	60	62	64	66								
A	81	88	89	96	97	104	105	112	113	120	121	128	129	136	137	144
B	69	76	77	84	85	92	93	100	101	108	109	116	117	124	125	132
C	85	92	93	100	101	108	109	116	117	124	125	132	133	140	141	147
D	78	80	80	82	82	84	84	86								
E	5	5	5	5	5	5	5	5								



The XComfort is a range based on flame retardant solution that gives the cotton fiber fabrics a durable flame retardant finish.

This flame retardant finish is not a coating, it is a chemical bonding with the molecular structure of natural cotton. In the event that the fabric is exposed to fire a carbon char is formed, this carbon char works as a heat shield and also controls the spread of the flame.

This fabrics offer its users a superior comfort Its inherent softness is enhanced by its ability to keep the wearer cool in hot climates, and warm in cold.

STANDARDS

This article is in conformity with the model of individual safety equipment which correspond to

**The CE Type-examination certificate n° 0161/3841/14
Delivered by AITEX (notified body n° 0161)**

**EN ISO 11612 : 2008
A1, B1, C1, E3, F1**



- Limited flame spread = A1
- Insulation against convective heat = B1
- Insulation against radiant heat = C1
- Insulation against the iron spatter = E3
- Insulation against contact heat = F1

**EN ISO 11611:2007
Class 1 – A1**



- (A1) against burns from welding and similar processes (Class 1) = Class 1 – A1

**IEC 61482-2:2009
Class 1 – 4kA**



- Against the risk of burn provoked by an electrical arch = 4kA (Class 1)

**EN 13034: 2005+A1:2009
Type PB6**



- Clothes standardized type 6 protect users at least cover torso and limbs = Type PB6

(Type 6 with jacket and trouser together)

EN 1149-5: 2008



- Against the risk of accumulation of electrostatic loads



This model is in conformity with the
standard EN 13688 : 2013

Washing instructions*:



* Consult the manufacturer before any operation